



MATERIAL HANDLING

INNOVATIVE SOLUTIONS

Reliable, quick to install, industry-proven products

DESIGN NAVIGATOR

		Max Current Rating (A) ¹	High Vibration Performance	Particle & Liquid Sealing	Environmental Corrosion Protection	Protection Against Mechanical Shock	Thermal Performance	Power & Signal Combined	Durable in Harsh Environments	Quick Connect/Disconnect	Speed & Determinism	Standards	
1	POWERED ROLLERS / BELT / PLATFORM SYSTEMS												
	AMPMODU Board-to-Board & Wire-to-Board Conn.	1 to 3										UL, CSA	
	Circuit Protection Devices	15										UL, CSA, TUV	
	Dynamic Series Wire-Applied Connectors	65										UL, RU, CSA, TUV	
	Eurostyle Terminal Blocks	125										RU, CSA, VDE	
	M8/M12 Connector System	5.0										UL, CSA	
Mini-Universal MATE-N-LOK Wire-Applied Conn.	11.2										UL, CSA, VDE (250V Max)		
Signal Double Lock Wire-Applied Connectors	3.0										UL, CSA, VDE		
2	MOTOR & CONTROLLERS												
	AMPLIMITE D-subminiature Connectors	7.5										UL, CSA	
	AMPMODU Board-to-Board & Wire-to-Board Conn.	1 to 3										UL, CSA	
	Cable Assemblies²	N/A										UL, CSA, VDE	
	CHAMP Board-to-Board & Wire-to-Board Conn.	1.0										UL, CSA, SCSI	
	Circuit Protection Devices	15										UL, CSA, TUV	
	Circular Plastic Connectors (CPC)	60										UL, CSA, VDE	
	Corcom Power Line Filters	Refer to the table below for product details										UL, CSA, VDE	
	DIP Switches	0.1											N/A
	Dynamic Series Wire-Applied Connectors	65										UL, RU, CSA, TUV	
	Heavy Duty Connectors (HDC)	350										UL, CSA, SEV, VDE, DIN	
	Industrial Ethernet Products	0.5										UL, CSA	
	Industrial Mini I/O Connector System	0.5										N/A	
	Mini-Universal MATE-N-LOK Wire-Applied Conn.	11.2										UL, CSA, VDE (250V Max)	
	Motorman Hybrid I/O Connectors	20										UL, CSA, VDE, Cat5e	
	PLASTI-GRIP Terminals & Splices	N/A										N/A	
	Printed Circuit Board (PCB) Relays	35										RU, CSA, UL, TUV, SEMCO, CQC, Industry*	
	RJ45 Modular Jacks & Plugs	1.5										TIA-1096-A	
	SFP+ Connectors & Cages	N/A										Industry*	
Terminal Blocks	30										RU, CSA		
Terminals & Splices	30										UL, CSA, Industry*		
USB Connectors	1.8										Industry*		
3	INDUSTRIAL SENSING DEVICES												
	AMPLIMITE D-subminiature Connectors	7.5										UL, CSA	
	Circular Plastic Connectors (CPC)	60										UL, CSA, VDE	
	Industrial Ethernet Products	0.5										UL, CSA	
	Industrial Mini I/O Connector System	0.5										N/A	
	M8/M12 Connector System	5.0										UL, CSA	
4	FLUID POWER / PNEUMATIC POWER												
	AMPLIMITE D-subminiature Connectors	7.5										UL, CSA	
	Circular Plastic Connectors (CPC)	60										UL, CSA, VDE	
	Corcom Power Line Filters	Refer to the table below for product details										UL, CSA, VDE	
	Dynamic Series Wire-Applied Connectors	65										UL, RU, CSA, TUV	
	Heavy Duty Connectors (HDC)	350										UL, CSA, SEV, VDE, DIN	
	Industrial Ethernet Products	0.5										UL, CSA	
	M8/M12 Connector System	5.0										UL, CSA	
5	HMI / DISPLAY & CONTROL UNIT												
Refer to the Innovative Solutions for Industrial Control guide (document number 6-1773462-6) for information on products included in this subsystem													
6	SAFETY NETWORK												
	Force Guided Relays	8.0										RU, VDE, TUV, CQC, Industry*	
	Knobs	N/A										N/A	
	M8/M12 Connector System	5.0										UL, CSA	
Switches	20										UR, CSA, VDE, UL		
7	INDUSTRIAL NETWORKING INFRASTRUCTURE												
	AMPLIMITE D-subminiature Connectors	7.5										UL, CSA	
	Cable Assemblies²	N/A										UL, CSA, VDE	
	Circular Plastic Connectors (CPC)	60										UL, CSA, VDE	
	Industrial Ethernet Products	0.5										UL, CSA	
	Industrial Mini I/O Connector System	0.5										N/A	
	M8/M12 Connector System	5.0										UL, CSA	
USB Connectors	1.8										Industry*		
8	LIGHT STACK												
	AMPLIMITE D-subminiature Connectors	7.5										UL, CSA	
	Circular Plastic Connectors (CPC)	60										UL, CSA, VDE	
M8/M12 Connector System	5.0										UL, CSA		

CORCOM EMI/RFI POWER LINE FILTERS				
Series	Type	Rated Current / Voltage (max)	Agency Approvals	
FC Series	Single Phase	RFI Filter for Frequency Converters	6 - 50A / 250 VAC	
K Series		General Purpose RFI Filter	1 - 60A / 250 VAC	
AYC Series	Three Phase	WYE or Delta RFI Power Line Filter	16 - 200A / 480 VAC / 277 VAC	
BCF Series		Compact Delta RFI Filter for universal applications	7 - 180A / 480 VAC / 277 VAC	

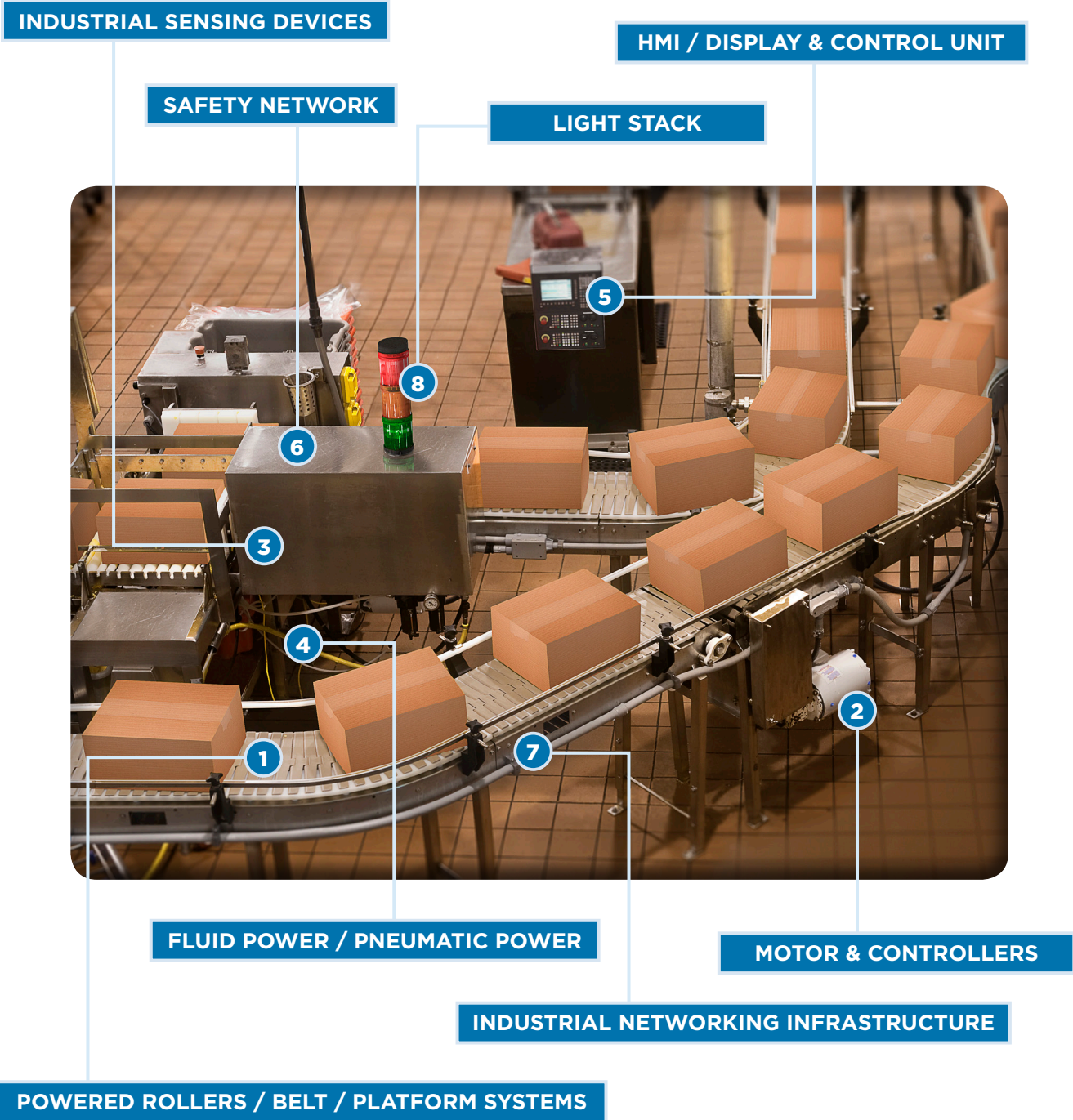
For a complete list of TE's Corcom EMI/RFI filters, visit: www.corcom.com

¹ May vary based on application and product selection

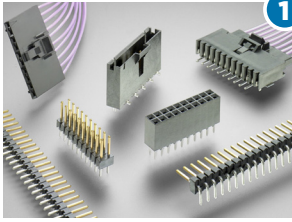
² Solves the same problems as the applied interconnect

UL - UL Listed
 RU - Recognized Under
 CSA - Canadian Standards Association
 * Industry - Meets product specific industry standards
 (see product page on te.com for more detail)

TE offers solutions for all of your material handling design needs.



FEATURED PRODUCTS

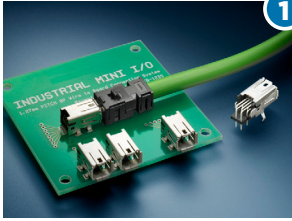


1

AMPMODU Board-to-Board & Wire-to-Board Connectors

- Achieve high vibration performance and reliability with polarized latching receptacles
- Reduce termination time with optional insulation displacement contacts (IDC)
- Satisfy a broad range of signal needs with easy application and competitively priced diverse portfolio

[Website](#)
[Catalog](#)
[Quick Reference Guide I](#)
[Quick Reference Guide II](#)

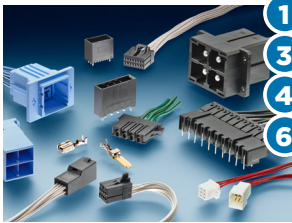


1

Industrial Mini I/O Connector System

- Obtain a Cat5e connection using a small and rugged industrial connector
- Save wire termination time with an innovative field installable piercing contact
- Ensure reliable connections in industrial and vibration-prone environments

[Website](#)
[Data Sheet](#)



1

Dynamic Series Wire-Applied Connectors

- Suitable for low signal to high power applications with a broad range of versatile contacts
- Save time and money with a centralized modular wiring system
- Prevent mismatching with keyed housings

[Website I](#)
[Website II](#)
[Catalog](#)
[Quick Reference Guide](#)



1

M8/M12 Connector System

- Save time and money with a complete standard portfolio of connectors, cable assemblies and passive I/O modules
- Design for applications exposed to harsh environments and extreme temperatures
- Provide a comprehensive industrial communications offering with customized solutions and cable assemblies

[Website](#)
[Catalog](#)
[Data Sheet](#)



1

Industrial Ethernet Products

- Support low cost, reliable connections with proven RJ45 interface and field installable option
- Ideal for use in harsh environments with high grade IP rating and temperature resistance
- Achieve design flexibility with Fiber Optics or RJ45 copper connections

[Website](#)
[Catalog](#)

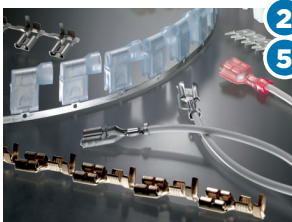


2

RJ45 Modular Jacks & Plugs

- Reduce electrical noise and gain up to Cat 5e performance
- Gain additional PCB space with low profile and narrow housing design
- Suitable for a broad range of applications with diverse product configurations

[Website I](#)
[Website II](#)
[Catalog I](#)
[Catalog II](#)
[Quick Reference Guide](#)



2

Terminals & Splices

- Reliable in thermally diverse applications due to high quality crimp / brazed seam
- Improve productivity and reliability through quick connection design
- Gain design flexibility and ease of maintenance with broad portfolio

[Website](#)
[Catalog](#)
[Quick Reference Guide](#)

FEATURED PRODUCTS

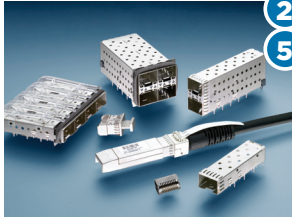


2
5

USB Connectors

- Support data transfer rates of standard USB 2.0 or the 10 times faster USB 3.0
- Optimize power efficiencies with improved device interaction and charging time
- Standard and customized styles and orientations available

[Website I](#)
[Website II](#)
[Quick Reference Guide](#)
[Video](#)

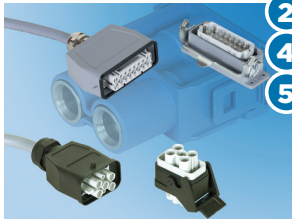


2
5

SFP+ Connectors & Cages

- Support (Industrial) Ethernet, applications for up to 16 Gb/s
- Improve thermal performance with enhanced side walls, vertical separators, and latch plate
- Outperform standard SFP+ cages by a 3% reduction in temperature

[Website](#)
[Catalog](#)
[Quick Reference Guide](#)
[Virtual Sample Kit](#)



2
4
5

Heavy Duty Connectors (HDC)

- Lower applied cost with quick and easy assembly options
- Gain machine configuration flexibility by combining power, signal and data circuits
- Withstand severe environmental conditions with IP68 configuration options

[Website](#)
[Catalog](#)



2
3
4
7
8

Circular Plastic Connectors (CPC)

- Mixed power and signal available in a single interconnect
- Ideal for harsh environments where mechanical shock, moisture and debris are prevalent
- Efficient field repair achieved by removable contacts and replaceable coupling ring

[Website](#)
[Catalog I](#)
[Catalog II](#)

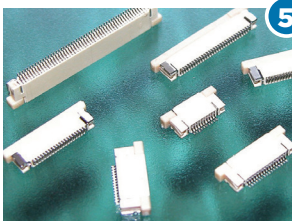


1
3
4
6
7
8

AMPLIMITE D-Subminiature Connectors

- Ideal for industrial applications due to intermateability and rugged design
- Proven performance at competitive prices
- Support a broad range of design and application needs with extensive product offering

[Website](#)
[Catalog](#)

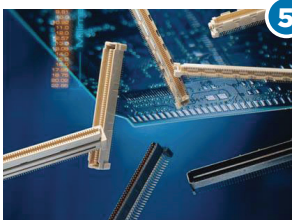


5

Flexible Printed Circuit (FPC) Connectors

- Maximize mating cycles and retention with zero insertion force (ZIF) option
- Support smaller and lighter designs with mixed signal and low power routing
- Maximize board space with angled insertion design option

[Website](#)
[Quick Reference Guide](#)



5

Free Height (FH) Board-to-Board Connectors

- Support high reliability with polarized mating
- Provide design flexibility with a variety of stack heights
- Save valuable PCB space with compact connector design

[Website](#)
[Catalog](#)
[Quick Reference Guide](#)

LET'S CONNECT

TE Connectivity (TE) is your material handling solution provider for electromechanical and electronic components. Whether you are designing a new system or retrofitting an existing system, this solutions guide will help you select the required components with easy access to additional online information through te.com. TE's reliable, quick to install and industry-proven innovative product solutions may help you save on system maintenance costs and downtime.

Technical Support

te.com/support-center

Australia	+86 400-820-6015	Hungary	+36 1-2892040	Portugal	+34 91-6630420
Austria	+43 1-9056-0	India	+86 400-820-6015	Russia	+74 95-790-790-2200
Belgium	+31 73-6246999	Ireland	+1 800-882-391	Slovakia	+42 02-720-11102
Brazil	+55 11-2103-6000	Italy	+39 011-4012111	Slovenia	+38 615-602-132
China	+86 400-820-6015	Japan	+044-844-8052	South Africa	+97 150-457-0806
Czech Republic	+42 02-7201-1103	Korea	+02-3415-4607	Spain	+34 932-910-330
Denmark	+46 8-5072-5000	Latvia	+37 2-6778-673	Sweden	+46 8-5072-5000
Estonia	+37 2677-8673	Lithuania	+37 037426900	Switzerland	+41 71-447-0447
Finland	+46 8-5072-5000	Luxembourg	+31 73-6246999	Taiwan	+86 400-820-6015
France	+33 1-34-20-8686	Netherlands	+31 73-6246999	Turkey	+90 212-282-6053
Germany	+49 6151-607-1999	New Zealand	+86 400-820-6015	United Kingdom	+44 0800-267666
Greece	+97 1-4-347-0226	Norway	+46 8-5072-5000	United States of America	800-522-6752
Holland	+31 73-6246999	Poland	+48 22-4576750		

te.com

© 2014 TE Connectivity Ltd. family of companies. All Rights Reserved.

4-1773700-9 CIS CM 12/2014

AMPMODU, AMPLIMITE, CHAMP, CORCOM, MATE-N-LOK, Motorman, PLASTI-GRIP,
TE Connectivity and the TE connectivity (logo) are trademarks.
Other logos, product and/or company names might be trademarks of their respective owners.

While TE has made every reasonable effort to ensure the accuracy of the information in this brochure, TE does not guarantee that it is error-free, nor does TE make any other representation, warranty or guarantee that the information is accurate, correct, reliable or current. TE reserves the right to make any adjustments to the information contained herein at any time without notice. TE expressly disclaims all implied warranties regarding the information contained herein, including, but not limited to, any implied warranties of merchantability or fitness for a particular purpose. The dimensions in this brochure are for reference purposes only and are subject to change without notice. Specifications are subject to change without notice. Consult TE for the latest dimensions and design specifications.