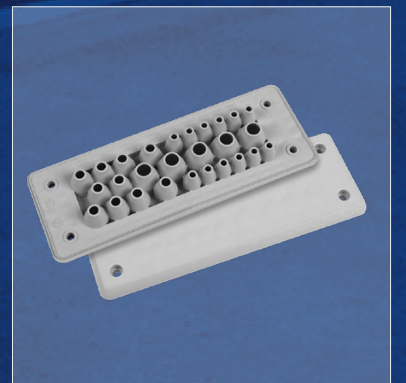
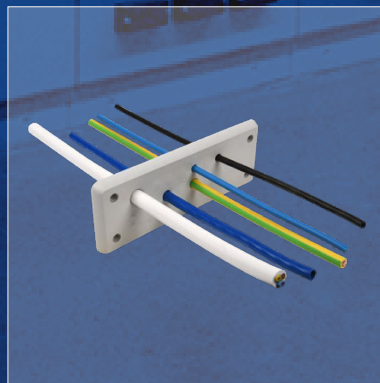


MH Series – Cable Entry Plates

FLEXIBLE, DURABLE, RELIABLE & SAFE



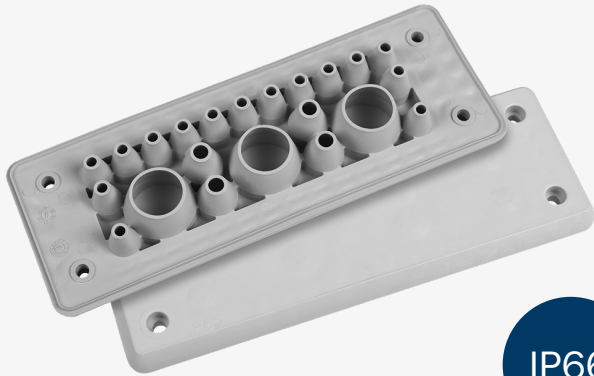
Total protection – easy access

Your cable entry plate is the critical point to grant access for what you need – and keep out what you don't. Meet the new Trelleborg Cable Entry Plate range: a plastic, reinforced plate that does exactly this, giving you total protection and easy cable access.

Cable Entry Plate offers complete, 360° resistance to the ingress of dust and water splashes, making it ideal for both indoor and outdoor use. But that isn't all it protects against. With IP66 classification, and constructed from fire-retardant, halogen-free materials, it gives you greater robustness, resilience and reliability as standard – as well as total peace of mind that your cable entry system is fit for purpose, right from the front line.

Flexible, durable
Reliable & safe

Designed for your industry

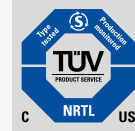


IP66

Product Advantages:

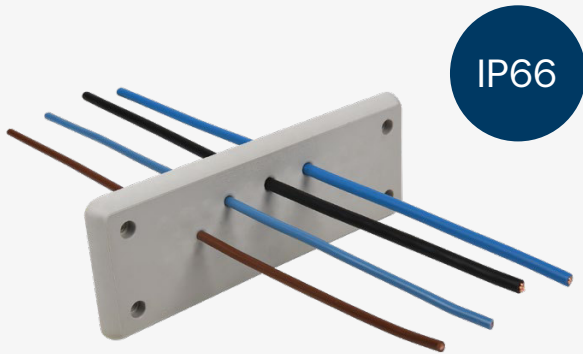
- Easy fitting
- High cable density
- Double sealing with high IP protection (IP66)
- Hygienic design with flat surface
- Suitable for indoor and outdoor applications

DRAWING	NAME	ITEM NUMBER	CABLE-THROUGH	CUTOUT
	MH10 F12-1	107294 Light grey 107293 Black	5 x 3mm - 7mm 4 x 5mm - 10mm 2 x 7mm - 13mm 1 x 9mm - 16mm	
	MH16 F17-1	107295 Light grey 107292 Black	12 x 3mm - 7mm 5 x 7mm - 13mm	
	MH24 F17-2	107296 Light grey 107291 Black	6 x 3mm - 7mm 6 x 5mm - 10mm 5 x 9mm - 16mm	
	MH24 F17-3	107466 Light grey 107472 Black	4 x 3mm - 7mm 12 x 7mm - 20mm 1 x 10mm - 20mm	
	MH24 F22-1	107481 Light grey 107513 Black	15 x 3mm - 7mm 4 x 4,5mm - 10mm 3 x 15mm - 20mm	
	MH24 F27-1	107480 Light grey 107512 Black	12 x 3mm - 7mm 10 x 4,5mm - 10mm 5 x 7mm - 13mm	
	MH24 F30-1	107465 Light grey 107471 Black	30 x 3mm - 8mm	
	MH24 F125-1	107562 Light grey 107651 Black	123 x 1,5 - 3mm 2 x 2,5 - 5mm	



IP66
EN 60529

RoHS
Compliant

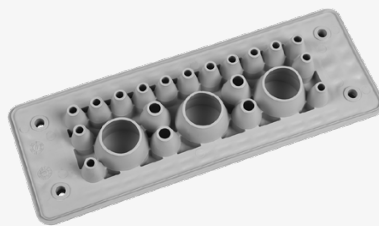


Technical information:

Material	Reinforcement: Polyamide Membrane: Elastomer
Flammability rate	UL94 V-0, self-extinguishing
Characteristics	Halogen free, silicon free
Protection grade	IP66 certified acc. to EN 60529
Temperature	-40°C up to +100°C
Overall height	19mm

DRAWING	NAME	ITEM NUMBER	CABLE-THROUGH	CUTOUT
	MH24 F19-1	107558 Light grey 107653 Black	5 x 1,5mm - 3mm 10 x 3,2mm - 6,5mm 4 x 16mm - 22mm	
	MH24 F20-1	107559 Light grey 107654 Black	6 x 1,5mm - 3mm 14 x 7,2mm - 12mm	
	MH24 F23-1	107555 Light grey 107652 Black	4 x 1,5mm - 3mm 4 x 3,2mm - 6,3mm 10 x 4mm - 7,5mm 1 x 5,5mm - 10,5mm 1 x 8mm - 12,5mm 3 x 12mm - 16,2mm	
	MH24 F23-2	107556 Light grey 107657 Black	4 x 1,5mm - 3mm 6 x 3,2mm - 6,3mm 2 x 4mm - 7,5mm 1 x 5,5mm - 10,5mm 10 x 8mm - 12,5mm	
	MH24 F30-2	107554 Light grey 107658 Black	8 x 1,5mm - 3mm 8 x 3,2mm - 5,5mm 6 x 4mm - 7,5mm 6 x 5mm - 8,5mm 2 x 9,5mm - 14,5mm	
	MH24 F30-3	107557 Light grey 107659 Black	6 x 1,5mm - 3mm 4 x 3,2mm - 6,3mm 14 x 4mm - 7,5mm 2 x 8mm - 12,5mm	
	MH24 F31-1	107561 Light grey 107655 Black	20 x 3,2mm - 6,5mm 8 x 5mm - 10,2mm 3 x 7,5mm - 12mm	
	MH24 F42-1	107560 Light grey 107656 Black	42 x 3,2mm - 6,5mm	

CABLE/TUBE DIAMETER	MH-10 F12-1	MH-16 F17-1	MH-24 F17-2	MH-24 F17-3	MH-24 F22-1	MH-24 F27-1	MH-24 F30-1	MH-24 F19-1	MH-24 F20-1	MH-24 F23-1	MH-24 F23-2	MH-24 F30-2	MH-24 F30-3	MH-24 F31-1	MH-24 F42-1	MH24 F125-1
1.5-3mm								5	6	4	4	8	6			123
2.5-5mm																2
3-7mm	5	12	6	4	15	12										
3-8mm							30									
3.2-5.5mm												8				
3.2-6.3mm										4	6		4			
3.2-6.5mm								10						20	42	
4-7.5mm										10	2	6	14			
4.5-10mm					4	10										
5-8.5mm												6				
5-10mm	4		6													
5-10.2mm														8		
5.5-10.5mm										1	1					
7-13mm	2	5				5										
7-20mm				12												
7.2-12mm									14							
7.5-12mm														3		
8-12.5mm										1	10		2			
9-16mm	1		5													
9.5-14.5mm												2				
10-20mm				1												
12-16.2mm										3						
15-20mm					3											
16-22mm								4								





TRELLEBORG

Using advanced polymer technology, Trelleborg's Antivibration Solutions (AVS) operation specializes in the field of rubber-to-metal bonding for the removal of unwanted noise and vibration. Part of the Industrial Solutions division of Trelleborg Group, we harness over 100 years of experience to solve a wide range of application and environmental challenges in sectors including rail, marine, industrial and off-highway. Focused on isolation, attenuation and suspension solutions of unrivalled quality and reliability, we have a reputation for high quality, outstanding performance and long service life. Our commitment and expert polymer technologies optimize comfort, health and safety while creating maximum business value through improved longevity, productivity and cost effectiveness.

WWW.TRELLEBORG.COM/ANTI-VIBRATION-SOLUTIONS
ANTIVIBRATION@TRELLEBORG.COM



**TRELLEBORG INDUSTRIAL
PRODUCTS FINLAND OY**

KIKKERLÄNTIE 72
38300 SASTAMALA
FINLAND



**TRELLEBORG INDUSTRIAL AVS
INDIA PVT LTD**

RAJDHANI INDUSTRIAL PARK,
PLOT 285, KIADB AVVERHALLI
INDUSTRIAL AREA
562 2111 BANGALORE
INDIA



**TRELLEBORG
INDUSTRIAL AVS**

NO. 8, ZHONGTONG ROAD
WUXI, JIANGSU
214143
CHINA

TRELLEBORG CABLE ENTRY SOLUTIONS
CES@TRELLEBORG.COM